

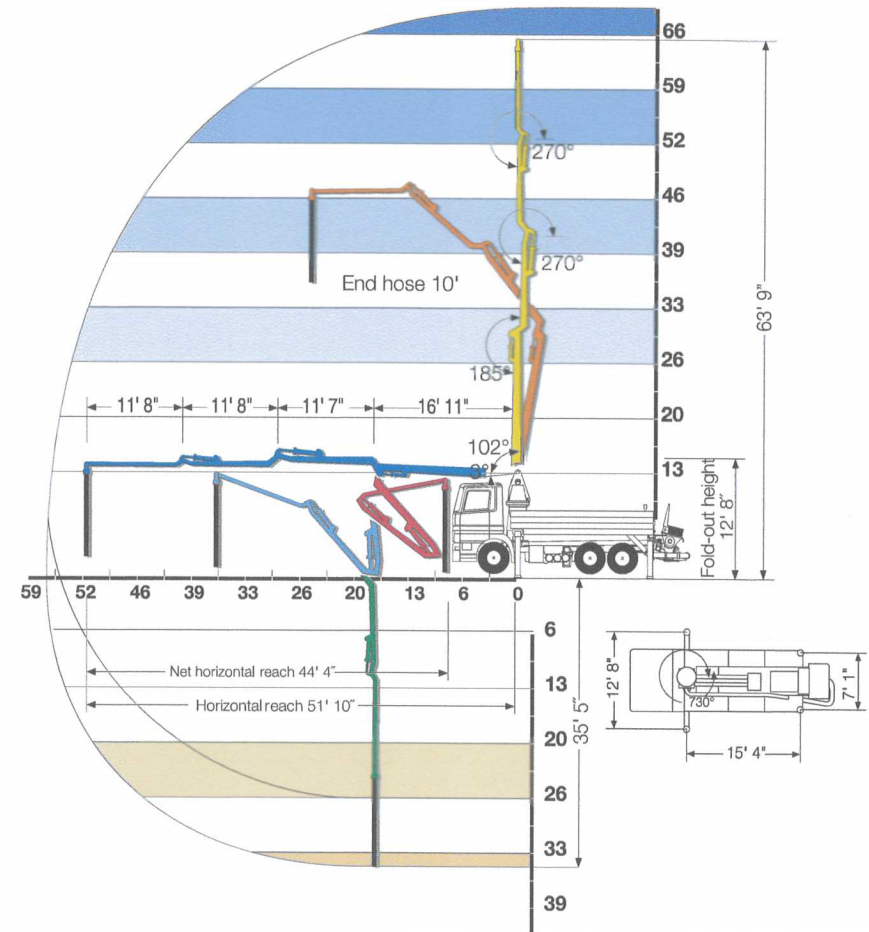
S 20

SPECIFICATIONS

	U.S.	Metric
Vertical Reach	63' 9"	19.4 m
Horizontal Reach	51' 10"	15.8 m
Below Grade Reach w/ Tip Hose	34' 5"	10.5 m
Pipeline Diameter	5 in	125 mm
Boom Type/ Sections	Full Articulation, H boom (Modified Z)/ 4	
Boom Rotation	730 degrees	
Unfolding Height	12' 8"	3.8 m
Outrigger Type- Front	Manual Extension & Hydraulic Jacking	
Outrigger Type- Rear	Hydraulic Jacking	
Outrigger Soil Pressure w/o Dunnage (front/rear)	313/199 psi	21.6/13.7 bar
Outrigger Soil Pressure w/ Dunnage (front/rear)	43/27 psi	3/1.9 bar
Outrigger Width, Front	12' 8"	3.85 m
Outrigger Width, Rear	7' 1"	2.15 m
Outrigger Length	15' 4"	4.68 m

PUMP SPECIFICATIONS

	U.S.	Metric
Theor. Concrete Output	130 cu yds/h	99 cu m/h
Max. Pressure on Concrete	1161 psi	80 bar
Max. Strokes Per Minute	20	
Max. Aggregate size	2.5 in	63.5 mm
Material Cylinder Diameter	9 in	230 mm
Material Cylinder Stroke	79 in	2000 mm
Differential Cylinder Diameter	4.3 in	110 mm
Maximum Oil Flow	79.3 gal/min	300 l/min
Hydraulic Circuitry Type	Twin Circuit	
Valve Type	M Rock	



*Pump specifications are for standard units. Other units are available. Specifications are subject to change without prior notice.

