

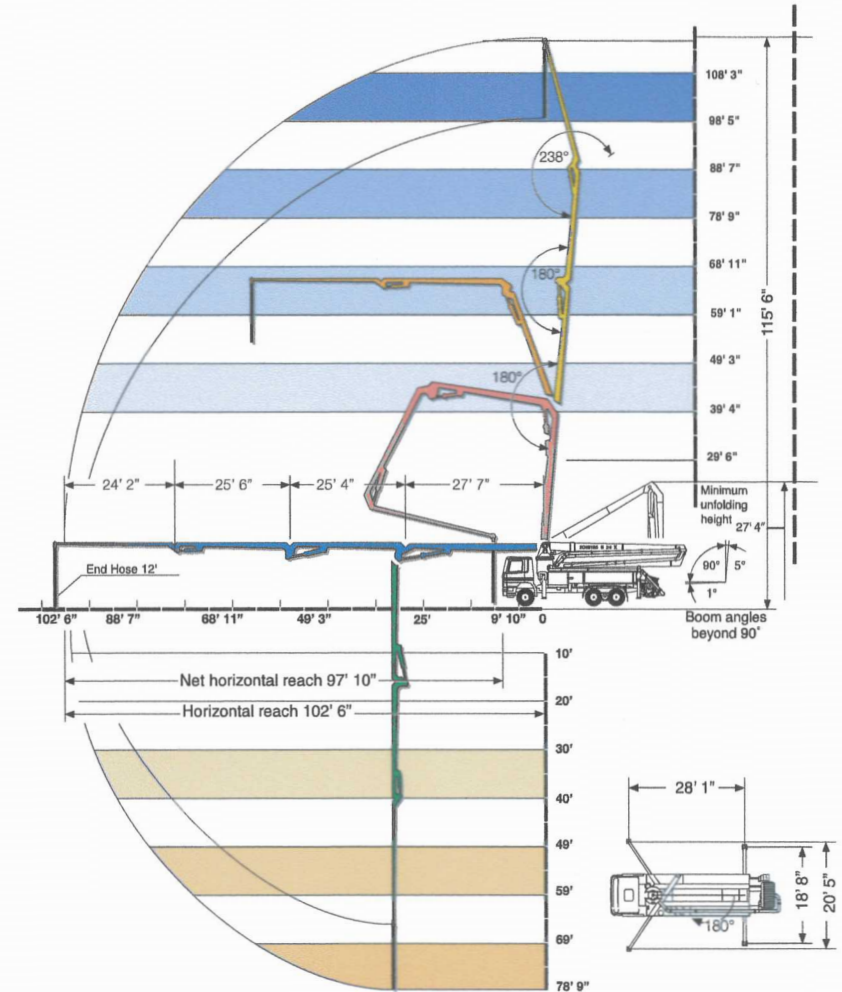
S 36 X

SPECIFICATIONS

	U.S.	Metric
Vertical Reach	115' 6"	35.2 m
Horizontal Reach	102' 6"	31.3 m
Below Grade Reach w/ Tip Hose	78' 9"	24 m
Pipeline Diameter	5 in	125 mm
Boom Type/ Sections	Full Articulation, Roll & Fold®/ 4	
Boom Rotation	730 degrees	
Unfolding Height	27' 4"	8.32 m
Outrigger Type- Front	X Outriggers, Fully Hydraulic, Extension & Jacking	
Outrigger Type- Rear	Hydraulic Slewing & Jacking	
Outrigger Soil Pressure w/o Dunnage (front/rear)	419/331 psi	28.9/22.8 bar
Outrigger Soil Pressure w/ Dunnage (front/rear)	76/60 psi	5.2/4.1 bar
Outrigger Width, Front	20' 5"	6.1 m
Outrigger Width, Rear	18' 8"	5.7 m
Outrigger Length	28' 1"	8.5 m

PUMP SPECIFICATIONS

	U.S.	Metric
Theor. Concrete Output	178 cu yds/h	136 cu m/h
Max. Pressure on Concrete	1002 psi	70 bar
Max. Strokes Per Minute	24	
Max. Aggregate size	2.5 in	63.5 mm
Material Cylinder Diameter	10 in	254 mm
Material Cylinder Stroke	79 in	2000 mm
Differential Cylinder Diameter	4.7 in	120 mm
Maximum Oil Flow	132.1 gal/min	500 l/min
Hydraulic Circuitry Type	MPS	
Valve Type	B Rock	



*Pump specifications are for standard units. Other units are available. Specifications are subject to change without prior notice.

