

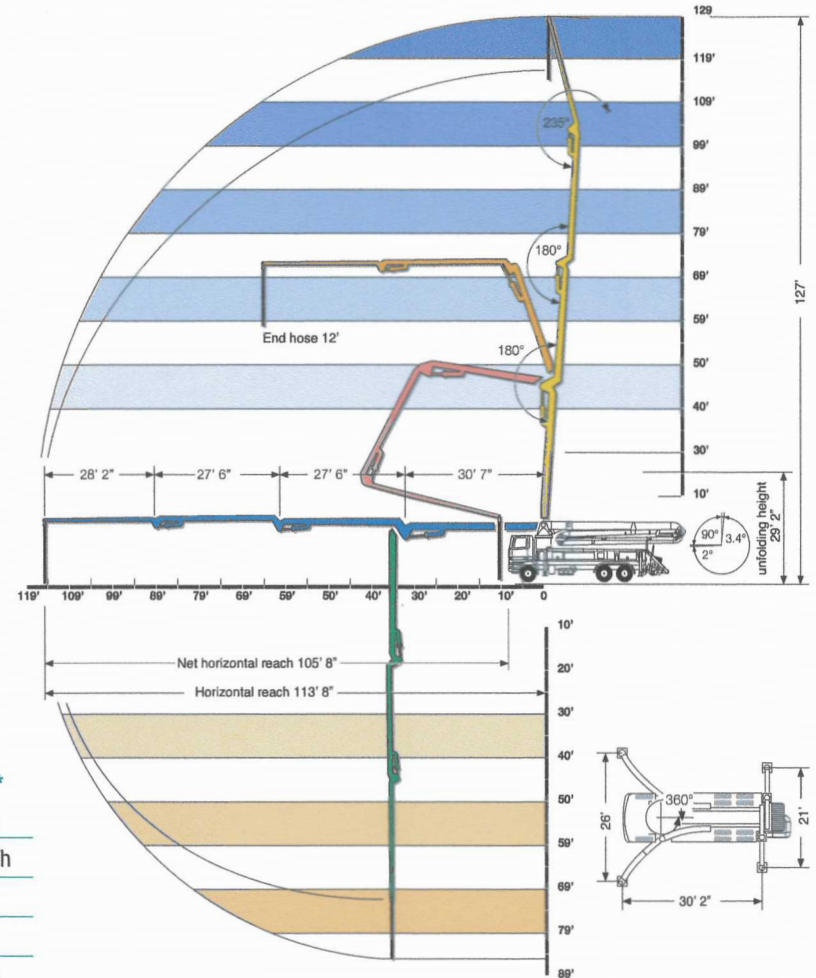
# S 39 SX

## SPECIFICATIONS

	U.S.	Metric
Vertical Reach	127 ft	38.7 m
Horizontal Reach	113' 8"	34.7 m
Below Grade Reach w/ Tip Hose	89 ft	27.1 m
Pipeline Diameter	5 in	125 mm
Boom Type/ Sections	Full Articulation, Roll & Fold®/ 4	
Boom Rotation	730 degrees	
Unfolding Height	29' 2"	8.8 m
Outrigger Type- Front	Super X Outriggers, Fully Hydraulic, Extension & Jacking	
Outrigger Type- Rear	Hydraulic Extension & Jacking	
Outrigger Soil Pressure w/o Dunnage (front/rear)	296/296 psi	20.4/20.4 bar
Outrigger Soil Pressure w/ Dunnage (front/rear)	72/72 psi	5/5 bar
Outrigger Width, Front	26 ft	7.9 m
Outrigger Width, Rear	21'	6.5 m
Outrigger Length	30' 2"	9.2 m

## PUMP SPECIFICATIONS

	2525H-6 120/85 MPS		2023-5 130/80 MPS**	
	U.S.	Metric	U.S.	Metric
Theor. Concrete Output	213 cu yds/h	163 cu m/h	208 cu yds/h	159 cu m/h
Max. Pressure on Concrete	1169 psi	80 bar	1007 psi	70 bar
Max. Strokes Per Minute	22		32	
Max. Aggregate size	2.5 in	63.5 mm	2.5 in	63.5 mm
Material Cylinder Diameter	10 in	254 mm	9 in	230 mm
Material Cylinder Stroke	98 in	2500 mm	79 in	2007 mm
Differential Cylinder Diameter	4.7 in	120 mm	5.1 in	130 mm
Maximum Oil Flow	158.5 gal/min	600 l/min	132.1 gal/min	500 l/min
Hydraulic Circuitry Type	MPS		MPS	
Valve Type	B Rock		B Rock	



\*Pump specifications are for standard units. Other units are available. Specifications are subject to change without prior notice.

\*\*Used for detachable booms.

